



MONTHLY MEMBERSHIP PROGRESS REPORT

District 322C1

Results as of: 05/31/2019

GMT: SWADESH RANJAN SAHA

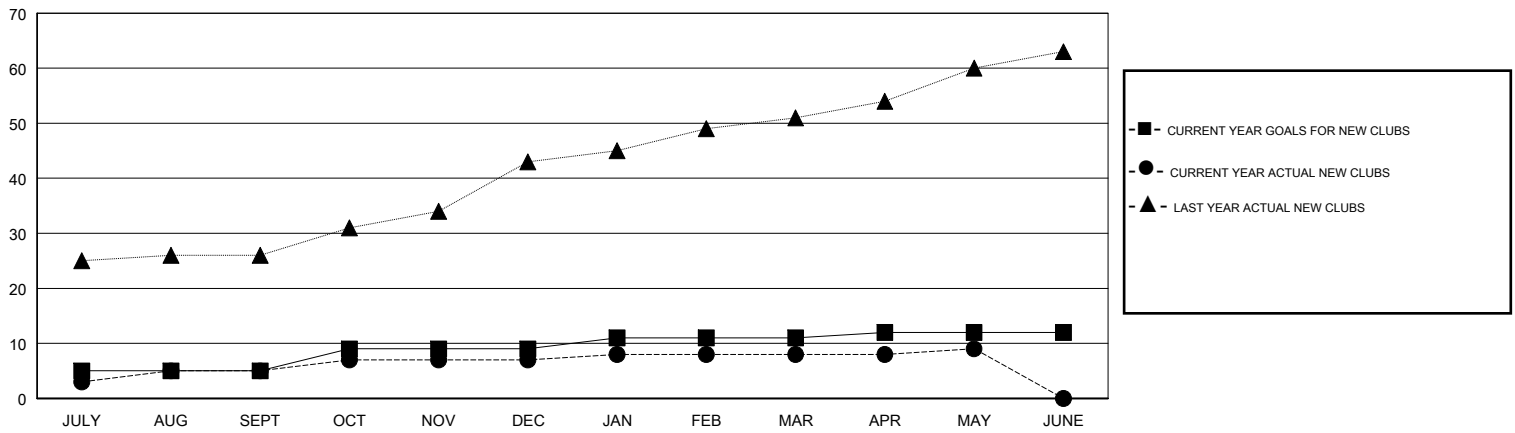
LOCATION INDIA

GMT CA

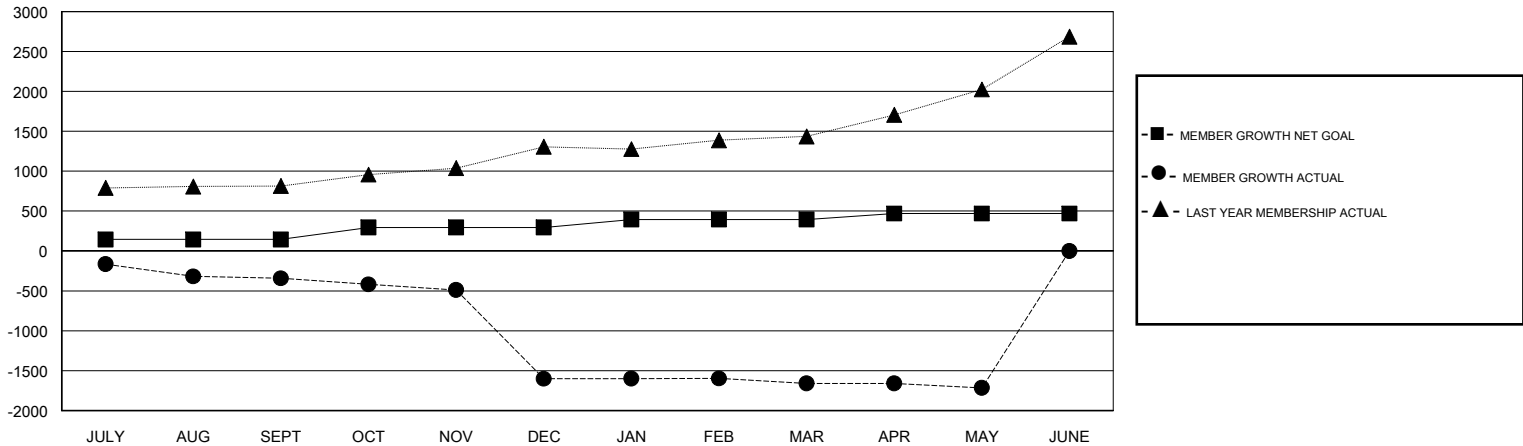
Clubs			
RESULTS FOR 2018-2019			
QUARTER	NEW CLUB GOAL	NEW CLUBS	DROPPED CLUBS
JULY/AUG/SEPT	5	5	3
OCT/NOV/DEC	4	2	24
JAN/FEB/MAR	2	1	4
APR/MAY/JUNE	1	1	0

Members			
RESULTS FOR 2018-2019			
QUARTER	MEMBER GROWTH NET GOAL	MEMBER GROWTH ACTUAL	DROPPED MEMBERS ACTUAL (including transfers)
JULY/AUG/SEPT	145	172	494
OCT/NOV/DEC	150	106	1,355
JAN/FEB/MAR	100	62	105
APR/MAY/JUNE	75	58	104

GOALS AND ACTUAL NEW CLUBS CUMULATIVE



GOALS AND ACTUAL MEMBERS CUMULATIVE



DROPPED CLUBS: 31

57 CLUBS OF 172 ADDED 1 OR MORE NEW MEMBERS

GENDER DISTRIBUTION	
MALE	3,125 (74.83%)
FEMALE	1,051 (25.17%)
Women Percentage Fiscal Year Goal: 28%	

DROPPED MEMBERS	
DECEASED	16
CLUB CANCELLED	1,107
OTHER	935
TOTAL	2,058

[CLICK HERE FOR CUMULATIVE MEMBERSHIP DATA](#)

TOTAL FAMILY UNIT MEMBERS	2,162
FAMILY MEMBERS PAYING HALF DUES	1,261